

F15

PICK & CARRY CRANE

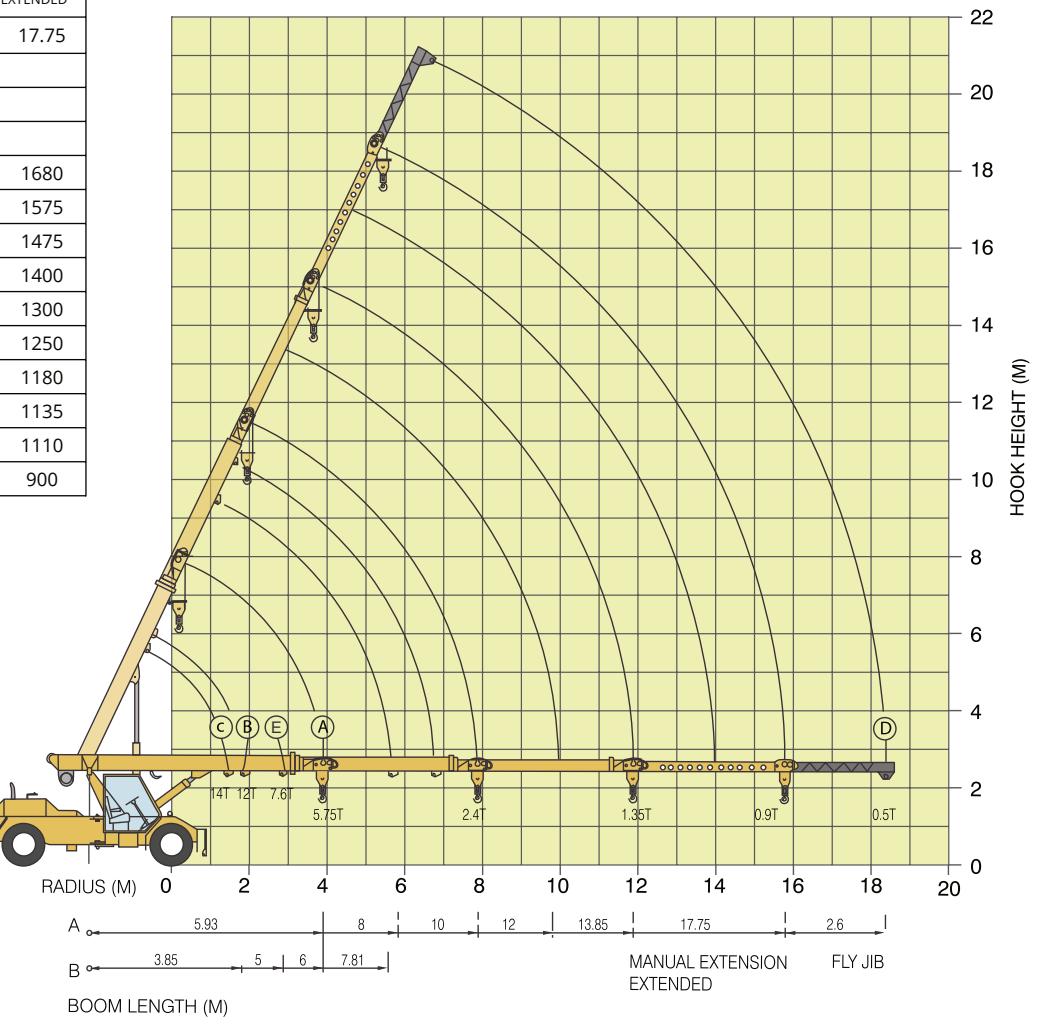


(A)						
RADIUS (M)	BOOM LENGTH IN METRES- MANUAL EXTENSION RETRACTED					MANUAL EXTENSION EXTENDED
	5.93	8	10	12	13.85	17.75
2	7500	7500	7500			
3	7500	7500	6900	5200		
4	5750	5700	5070	4500	3970	
5		4400	4760	4000	3460	1680
6		3600	3525	3475	3100	1575
7			2900	2900	2750	1475
8			2400	2478	2400	1400
9				2130	2080	1300
10					1775	1250
11					1550	1180
12					1350	1135
13						1110
16						900

(B)				
RADIUS (M)	PIVOT TO INNER LUG 1ST JIB EXTN. MANUAL EXTN. MANUAL EXTN. RETRACTED			
	3.85	5	6	7.81
2	12000	11000	11000	10550
3		7000	7000	6700
4			4800	4750
5				3500

(C)	
14T LUG (BOOM FULLY RETRACTED)	
RADIUS (M)	S.W.L (KG)
1.5	14000

(E)				
RADIUS (M)	BOOM PIVOT TO OUTER LUGIST JIB EXTN. MANUAL EXTN. RETRACTED			
	4.97	6.5	7.5	8.93
2	11000	10500	10000	7500
3	7600	7400	7300	6000
4		5000	4900	4800
5			3800	3700
6				3000
7				2300



RADIUS (M)	(D)
FLY JIB (BOOM FULL EXTENTION)	
6.4	750
8.0	750
10.9	700
13.5	650
15.6	600
17.1	550
18.0	500
18.4	500

- ▷ Radius is the horizontal Distance Measured from the center of front wheel to the load point
 - ▷ S.W.L are based on firm level ground with tyres 11x20 - 16 ply rating to 115 PSI. Weight of hooks, blocks, slings & chain etc. included
 - ▷ Lift & Carry - the S.W.L Shall be carried with the minimum boom length & as close to the ground as possible at speed not in excess of 2 kmph.
 - ▷ Boom head mounted RHINO hook capacity - 6000 kg
- All Dimension are in mm and are variable with in + 5%**

SPECIFICATIONS

RATED CAPACITY	Max Weight	14.0 ton at 1.50 m radius
	Max Raduis	0.9 ton at 15.80 m radius
	Max Height	17.60 m
BOOM	Length	17.75 m
	Luffing Angle	0 to 65 degrees
	Telescoping	4 part boom, 3 part hydraulically powered & fully synchronised. 4th part power extended and manually pinned for safety
	Type	Slotted boom with rope compensation
	Derricking	Through double acting hydraulic cylinders
DIMENSIONS	Length	9 725 mm
	Width	2 450 mm
	Height	3 215 mm
TRACK	Front	1 825 mm
	Rear	1 825 mm
WHEELBASE		3 950 mm
OPERATING WEIGHT	Front	6 315 kg
	Rear	9 000 kg
	Total	15 315 kg
PERFORMANCE	Speed	max 40 km/hr
	Gradeability	40% unladen
ENGINE	Make and Model	Diesel engine of VOLVO Eicher make, Model E483 TCIC, Turbo charged water cooled, developing 75.3KW @ 2400 RPM
TRANSMISSION	Drive	4 wheel drive
	Type	Synchromesh gearbox with auxillary gearbox. Speeds-10 forward and 2 reverse
	Clutch	Single, dry type friction clutch plate
STEERING	Type	Full power orbitrol with twin hydraulic double acting rams
	Articulation	40 degrees
	Turning Radius	7 200 mm
TYRES		8 nos. - 11x20 - 16 PR
BRAKES	Service	Fully air operated 'S' cam dual circuit brakes on front & real axles
	Parking	Air operated, spring actuated fail safe brakes
HYDRAULIC SYSTEM	Pump	46 cc/rev
	Control Valve	Control Valve-3 spool double acting with a built in relief & auxillary valves
HOIST MECHANISM		Hydraulically operated with 4 falls Built in safety brakes
ELECTRICAL SYSTEM		24 V, DC

