

NS20

PICK AND CARRY CRANE
360° FULL SLEW

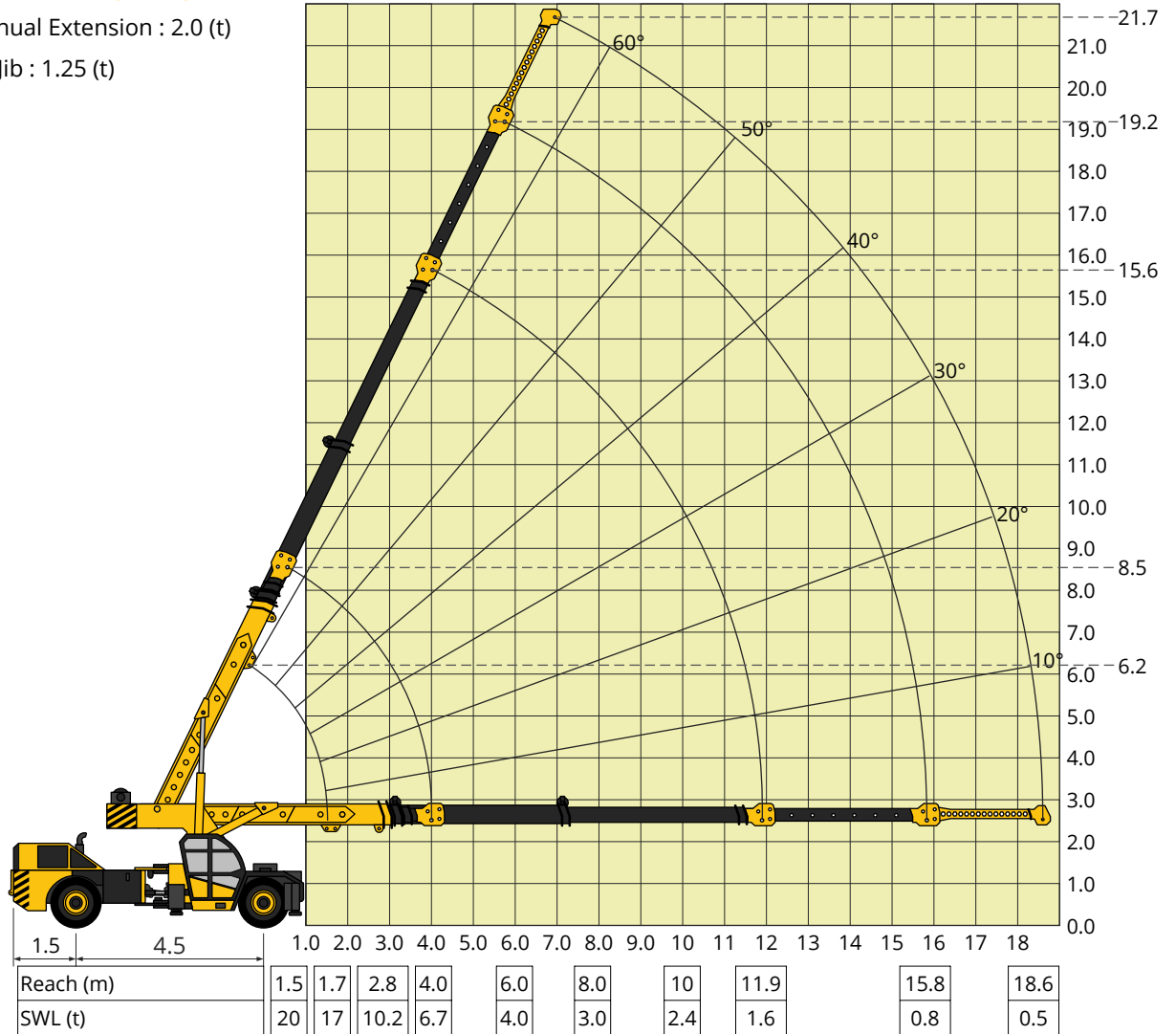


**CARRY
CRANES** 

AFFORDABLE • RELIABLE • SAFE

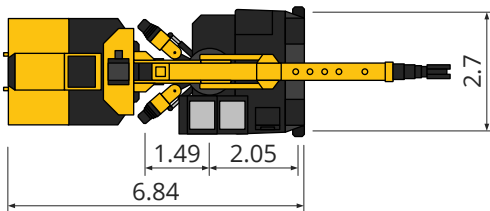
Load Chart : Pick and Carry Duty

- Max. Capacity Manual Extension : 2.0 (t)
- Max. Capacity Fly Jib : 1.25 (t)

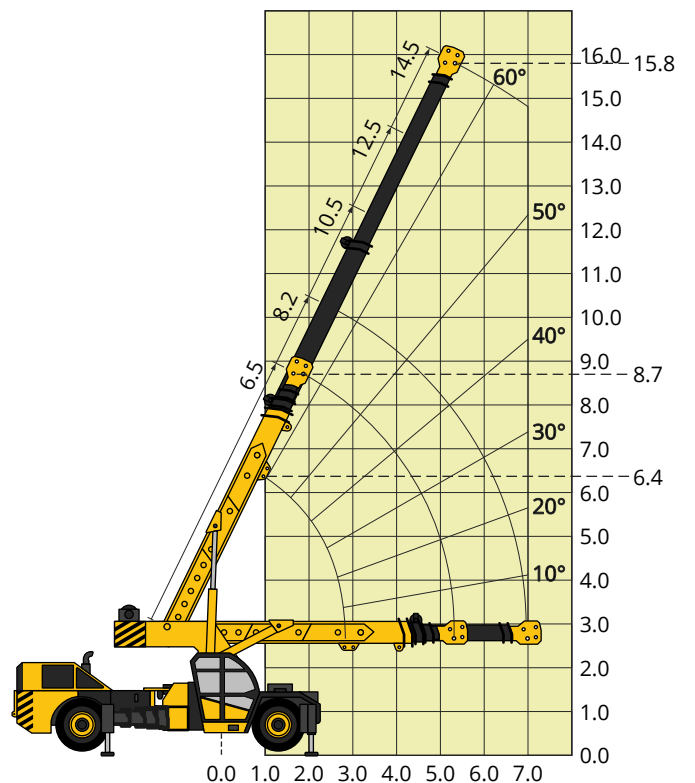


Load Chart : Slew Duty I

- Outriggers : Fully swung out but not extended
- Slewing Range : 360° Continuous

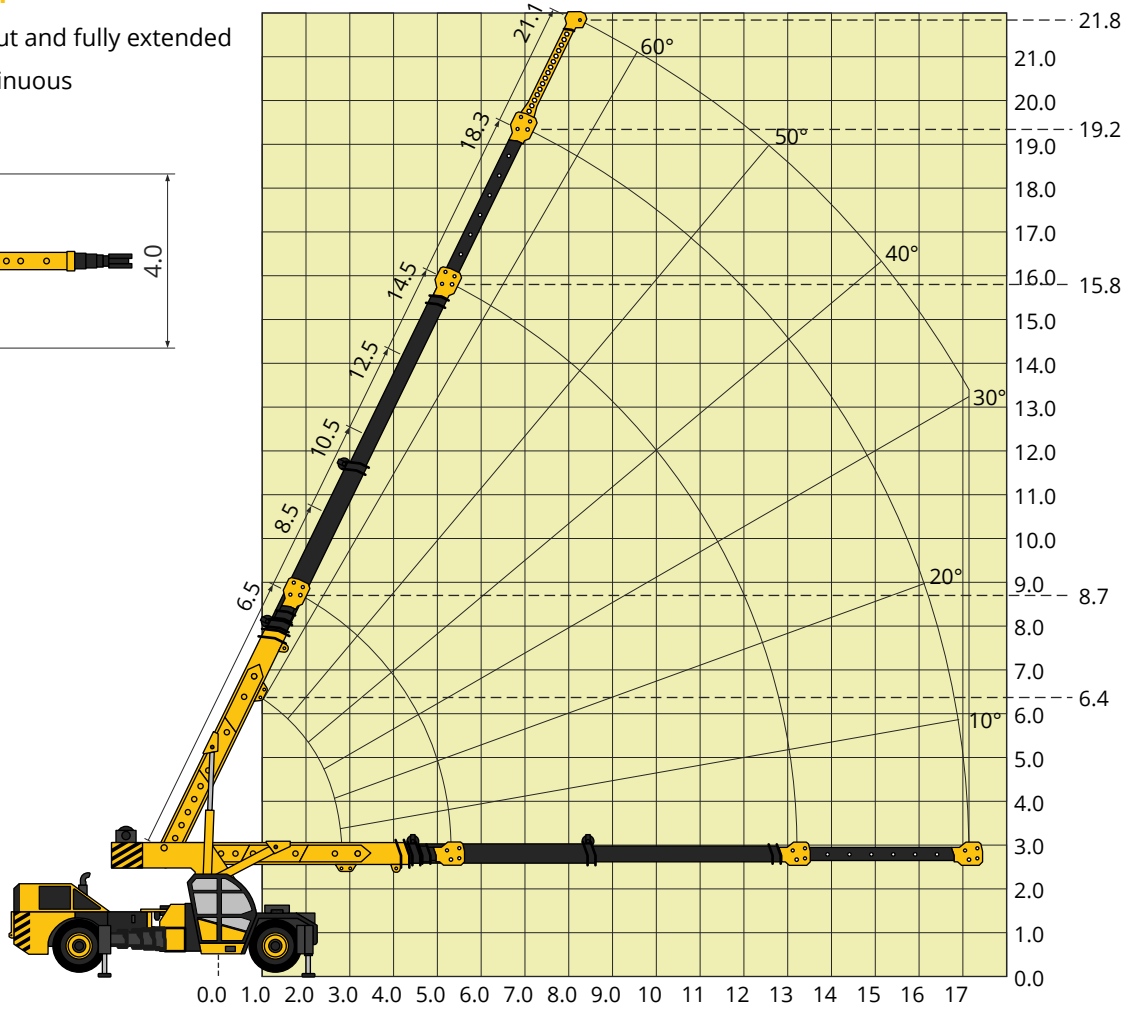
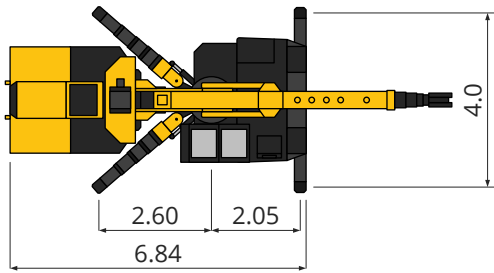


SLEW RADUIS	MANUAL EXT. CLOSED				
	6.5	8.5	10.5	12.5	14.5
2.5	8000	8000			
2.8	7100	7100			
3	5000	5000			
4	3200	3200	3000		
5	1850	1800	1650	1500	
6		1200	1200	1100	1000
7		800	800	700	700



Load Chart : Slew Duty II

- Outriggers : Fully swung out and fully extended
- Slewing Range : 360° Continuous



SLEW RADUIS	MANUAL EXT. CLOSED					MANUAL EXT. OPEN	FLY JIB
	6.5	8.5	10.5	12.5	14.5	17.1	19.9
2.5	18000	9000					
2.8	16000	9000					
3	14000	9000					
4	10500	9000	9000				
5	7500	7250	7100	7000			
6		5800	5600	5400	5300		
7		4100	4100	4000	4000	2000	
8			3800	3800	3600	1800	1250
9			2700	2700	2600	1600	1200
10				2000	2000	1200	1000
11				1800	1800	1100	900
12					1400	1100	800
13					1200	1000	700
14						1000	700
15						800	600
16						700	600
17						600	500

MAX LIFTING CAPACITY	20 000 kg
ENGINE	Ashok Leyland /Tata 4 Cylinder, Water Cooled Diesel Engine or equivalent
Rated Power	74.3 kw at 2200 RPM
TRANSMISSION	Heavy duty, synchromesh with 8 forward and 2 reverse speeds and hi-low drive selector for creep speed
Axles	Front Drive axle is rigidly mounted on the chassis. Rear drive axle is mounted with 2 nos. Leaf springs.
Drive	4 Wheel drive.
Clutch	Heavy duty, single, dry friction type hydraulic clutch.
Top Speed	35 KMPH on even metaled Road (without load)
Gradeability	40 % (unladen)
STEERING	Full power orbitrol with twin hydraulic double acting cylinders and 40° articulation on either side
Turning Radius	7 600 mm, on outer rear wheels.
BRAKES	<ul style="list-style-type: none"> • Dual Circuit Brakes • Fully Pneumatic brakes on front and rear wheels. • Parking brake is pneumatically operated, fail safe type
HYDRAULIC SYSTEM	<ul style="list-style-type: none"> • Gear type tandem pump • Four spools for crane operation. • Seven spools for outrigger operation. • Suction line has 100 mesh size strainer while return line is fitted with 25 micron full flow filter.
TYRES	
Front	12.00x20-18 PR (4 NOS.)
Rear	12.00x20-18 PR (4 NOS.)
SAFETY	<ul style="list-style-type: none"> • Safe load indicator with cutoff • Hose failure protection • Audio over hoisting Indication with cut off • Safety brakes on hoist • Self-adjusting hook block • Rear wheel guards
OPTIONAL EQUIPMENT	<ul style="list-style-type: none"> • Flyjib (Max Capacity : 1 250 kg) • Spark arrestor • Fire Extinguisher • Front and side Proximity Sensors • Cabin front glass protector • Helper/Slinger Seat

SUPER STRUCTURE	Super structure is capable of continuous slewing in either direction and mounted with sealed slew bearing.
OUTRIGGERS	
Front outriggers	Hydraulically operated telescopic outrigger beams with vertical hydraulic jacks fitted with safety lock valve.
Rear outriggers	Hydraulically operated swing and telescopic outrigger beams with vertical hydraulic jacks fitted with safety lock valve.
SLEWING	Hydraulic motor fitted with counter balance valve providing 360° continuous slew
BOOM DERRICKING	Two double acting hydraulic cylinders with counter balance safety valve
BOOM LUFFING	-2° to+ 64°
TELESCOPIC BOOM	<ul style="list-style-type: none"> • 4 section boom with 2 sections hydraulically operated & synchronized and 4th section power extended • Double acting hydraulic cylinder with counter balance safety valve is provided for boom telescoping
HOIST	Winch is driven by hydraulic motor and fitted with rope tensioner. Hoisting is provided through self adjusting hook block employing 6 falls of 13mm dia. Rope.
Hoist Speed	40 Mtrs./Min (Line Speed)
ELECTRICAL SYSTEM	24v, Negative earth.
STANDARD EQUIPMENT	Front & rear outriggers ROPS fully enclosed wide view cabin Load & Rear view cameras Front and rear work lights Reflectors & rear view mirrors Beacon rotating light Tool Kit Cabin fan Wiper Motor Gauges: Water Temperature, Engine Oil Pressure, Fuel Gauge, RPM meter cum hour recorder, Air Pressure Gauge, Speedometer
WEIGHT	
Front axle	10040 kg
Rear Axle	10200 kg
Total Weight	20240 kg
DIMENSIONS	
Lenght	10 000 mm
Width	2 950 mm
Height	3 200 mm

