

# NXP15

PICK AND CARRY CRANE, CUM  
AERIAL ACCESS PLATFORM



15 ton



15.5 m



21.0 m



1.5 km/h



High

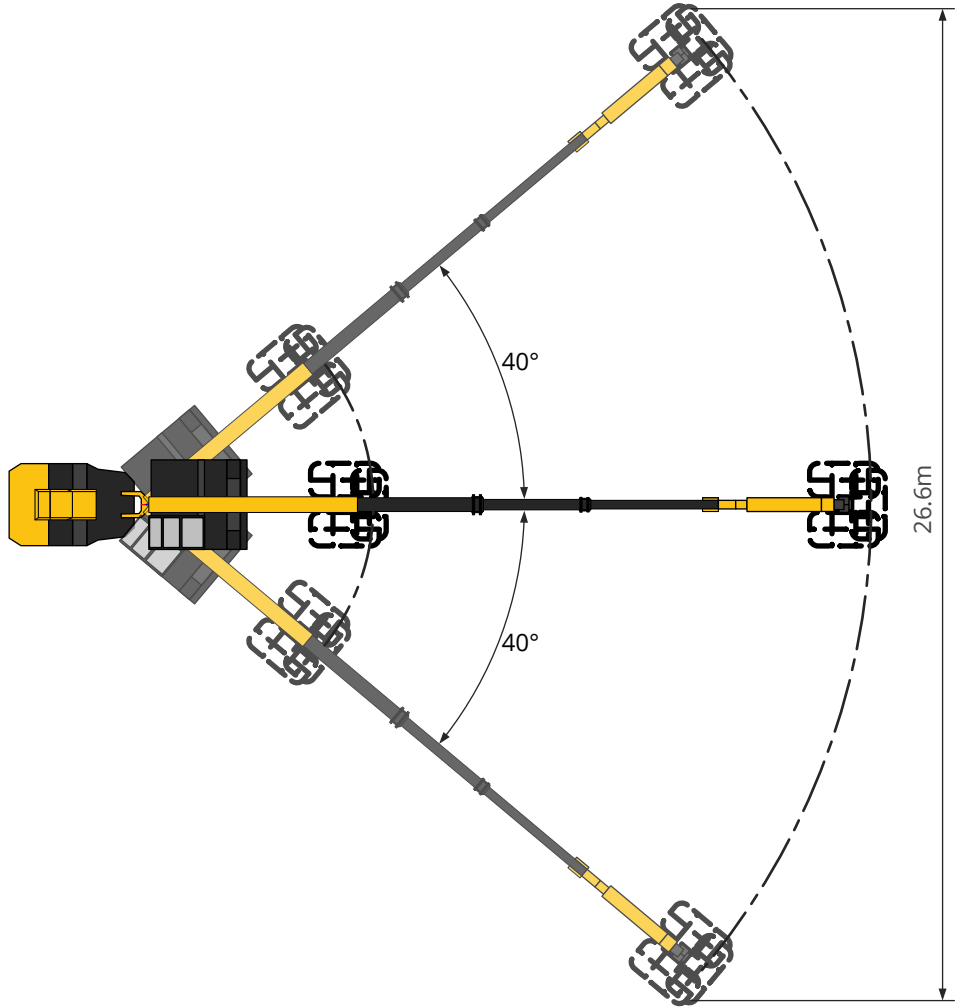


Low

## JIB ARTICULATION



## WORKING RANGE



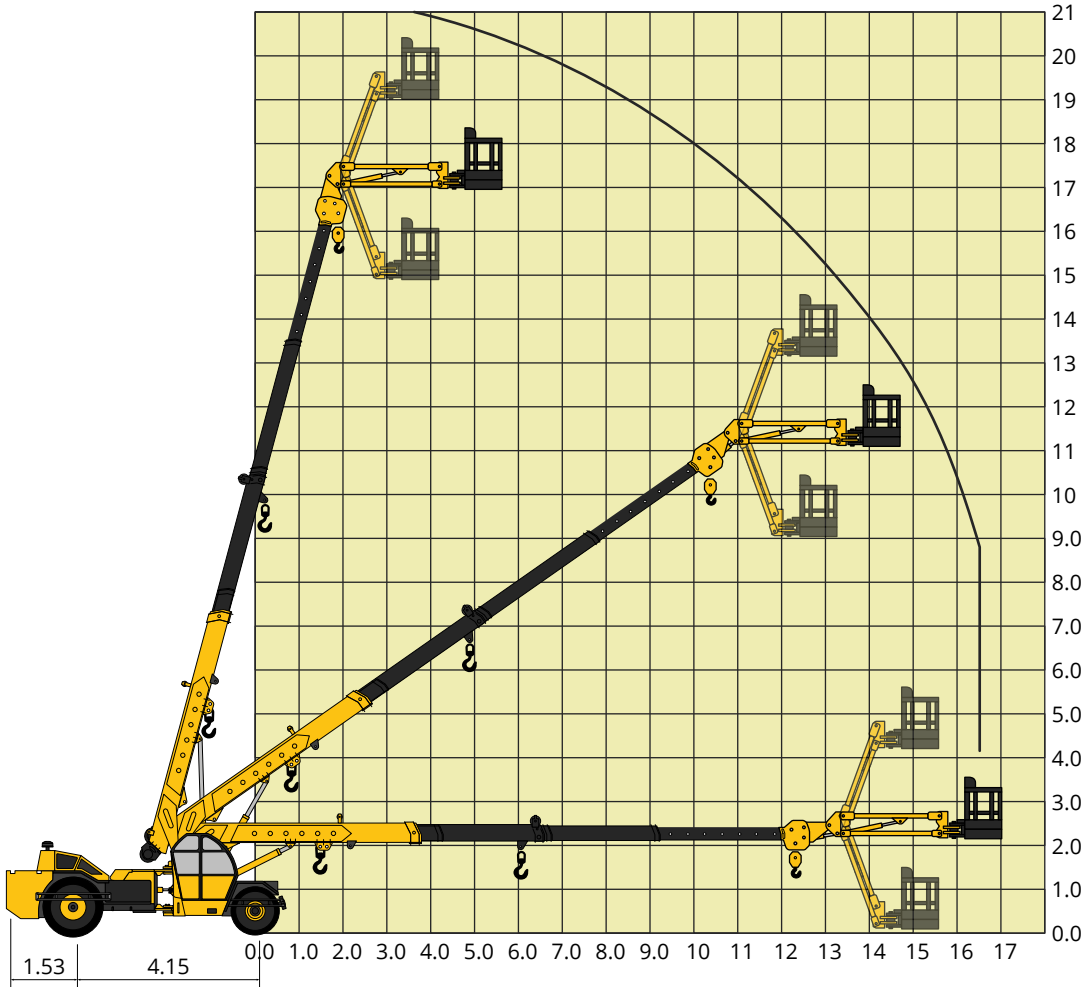
## PLATFORM ROTATION



## OVERVIEW

<b>Aerial Platform</b>	Access platform / Man Lift Basket is provided with quick coupling connections for easy and fast Installation / Removal	
<b>Length</b>	Length	1800 mm (1.8 m)
<b>Width</b>	Width	910 mm (0.91 m)
<b>Capacity</b>	230 Kgs	
<b>Maximum Range</b>	Working Height	21 m
	Platform Height	19 m
	Horizontal Reach	16.6 m
<b>Jib Angle</b>	Up	70°
	Down	70°
<b>Jib Articulation Range</b>	140° with 2 Mtrs. above & 2 Mtrs. below horizontal	
<b>Platform Rotation</b>	180° (90° on either side) Hydraulically Driven through Slew/ Rotary Drive	

**Man Basket Load Chart** (Max. Capacity of Man Basket - 230 kg)



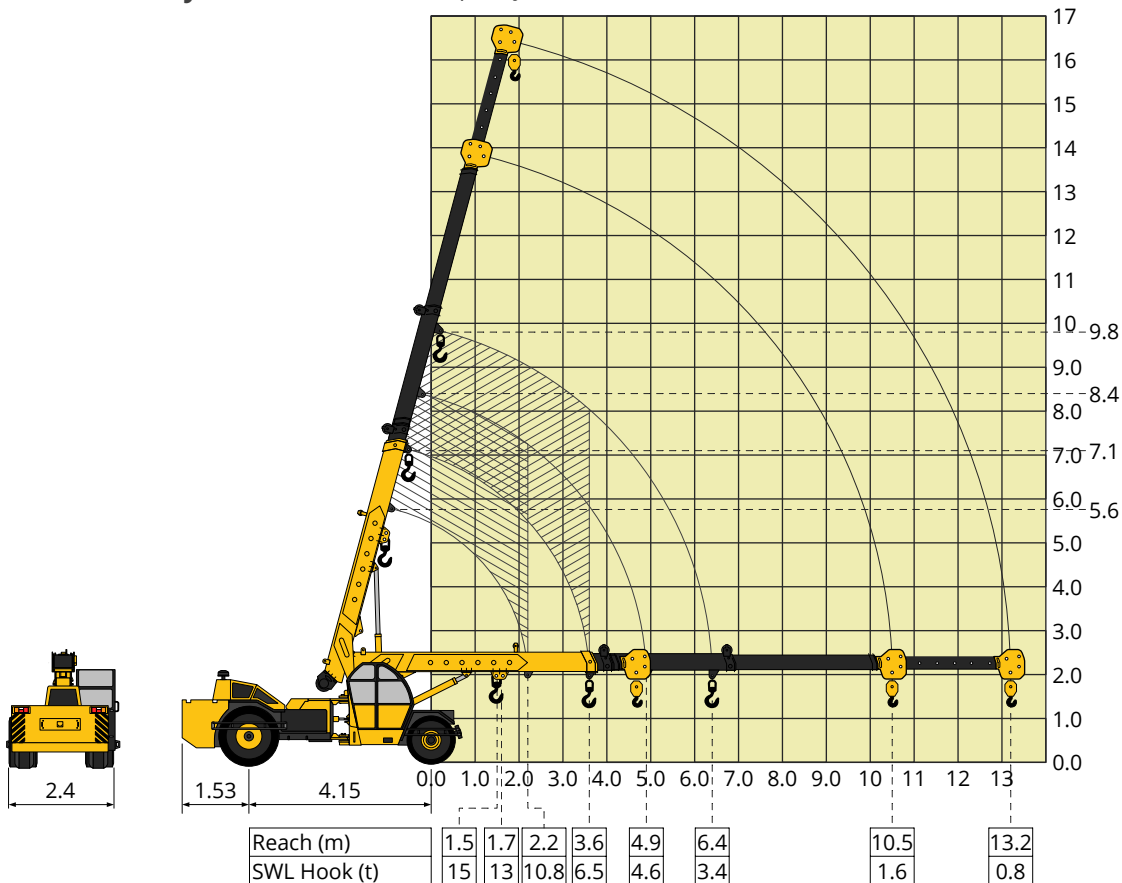
**STANDARD EQUIPMENT**

- Front mounted fully enclosed wide view cabin
- Rear View Camera
- Front and rear work lights
- Beacon rotating light
- Reflectors & Rear View Mirrors
- Tool Kit
- Cabin Fan

**OPTIONAL EQUIPMENT**

- 4 part slotted boom, 3 parts hydraulically operated & synchronized and 4th part power extended 18.3 m height)
- Fly Jib (1.25 Tonnes Max Capacity)
- Front and side Proximity Sensors
- Cabin Front Glass Protector
- Helper/Slinger Seat
- Spark arrester
- Fire Extinguisher
- Drag winch

**Pick and Carry Load Chart** (Max Capacity manual extension - 2.0 ton)



**SAFETY SYSTEMS**

- Front outriggers
- Hose failure protection
- Safe load indicator system
- Over Hoist hydraulic cutoff
- Safety brakes on hoist
- Self adjusting hook block
- Front and rear wheel guards



# Specifications

<b>RATED CAPACITY (HOOK)</b>	Max Weight	15.0 ton at 1.50 m radius
	Max Raduis	1.3 ton at 9.90 m radius
	Max Height	11.50 m
<b>RATED CAPACITY (MAN BASKET)</b>	Max Weight	230 kg
	Max Raduis	16.6 m
	Max Height	19.0 m
<b>BOOM</b>	Length	11.7 m
	Luffing Angle	-3 to 75 degrees
	Telescoping	4 part boom, 3 part hydraulically powered & fully synchronised. 4th part power extended and manually pinned for safety
	Type	Slotted boom with rope compensation
	Derricking	Through double acting hydraulic cylinders
<b>DIMENSIONS</b>	Length (Hook)	10 700 mm
	Width	2 400 mm
	Height	2 600 mm
<b>TRACK</b>	Front	1 900 mm
	Rear	1 800 mm
<b>WHEELBASE</b>		4 150 mm
<b>OPERATING WEIGHT</b>	Front	4 900 kg
	Rear	9 700 kg
	Total	14 600 kg
<b>PERFORMANCE</b>	Speed	max 32 km/hr
	Creep Speed	min 1.5 km/hr
	Gradeability	40% unladen
<b>ENGINE</b>	Make and Model	TATA 4 cylinder, water cooled diesel engine,developing 56.7KW @ 2200 RPM
<b>TRANSMISSION</b>	Drive	2 wheel drive
	Type	Synchromesh gearbox. Speeds-8 forward and 2 reverse with hi-low selector
	Clutch	Single, dry type friction clutch plate
<b>STEERING</b>	Type	Full power orbitrol with twin hydraulic double acting rams
	Articulation	40 degrees
	Turning Radius	8 200 mm
<b>TYRES</b>	Front	4 nos. - 11.00 x 20 - 16 PR
	Front	2 nos. - 14.00 x 25 - 20 PR
<b>BRAKES</b>	Service	Fully air actuated brakes on rear wheels and pneumatically assisted hydraulic brakes are provided on front wheels
	Parking	Air operated, spring actuated fail safe brakes
<b>HOIST MECHANISM</b>	Hook Block	8 T Hydraulically operated with 4 falls snatch block.
	Line Speed	50 m/min
<b>ELECTRICAL SYSTEM</b>		12 V, DC

