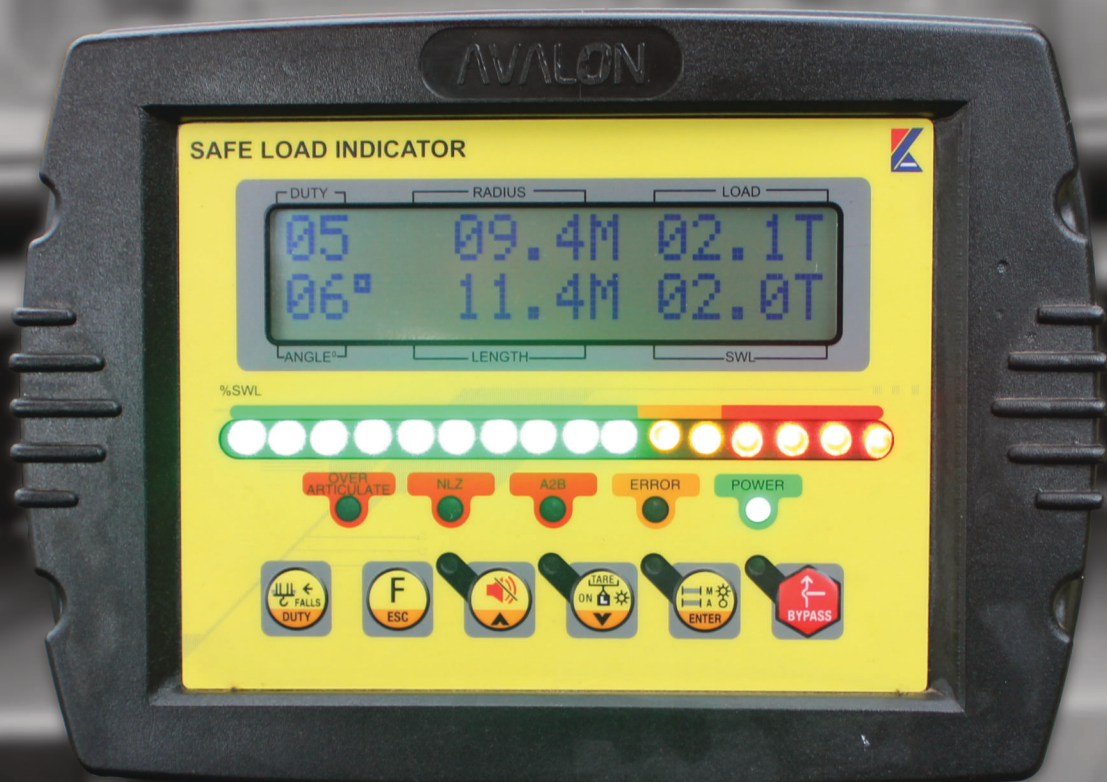


SLI



SAFE LOAD INDICATOR

DISPLAY UNITS

SAFE LOAD INDICATOR

Suitable for monitoring all types of cranes. Features include built-in light bar, overload cutout and display feedback.



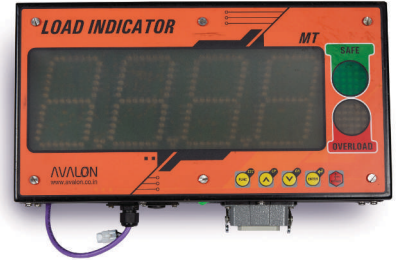
LOAD MOMENT INDICATOR

Suitable for monitoring knuckle boom and pipe layer cranes. Feature rich entry level unit.



LARGE DISPLAY SLI

Suitable for monitoring over head and gantry cranes. Ultra bright 4" 4-digit display. High visibility upto +50m



LOAD SENSORS

PRESSURE TRANSDUCER

Measures hydraulic pressure in the boom luff cylinder. Available from 100 - 400 Bar



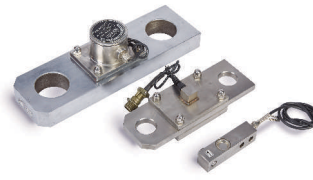
LOAD PINS

Measures the force on the wire rope pulley. Material: 17-4PH SS Capacity: from 1 - 20 MT



LOAD PLATE

Measures the force at the dead end of the wire rope. Capacity: 6, 12, 20, 30, 50 MT



DYNAMOMETER

Static 3 roller deflected sensor to measure the force in the wire rope. Capacity: 1 - 12 MT



OTHER SENSORS

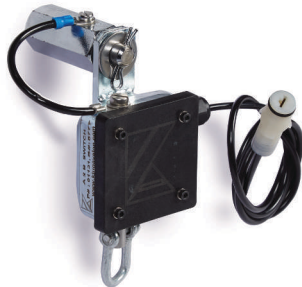
LENGTH AND ANGLE SENSOR

Measures the Boom length and boom angle of the crane. Also carries signal to the boom tip. Model: 20, 36, 48 & 60 mtrs



A2B SWITCH

Monitors the Over hoist condition. SS body with IP68 sealed switch



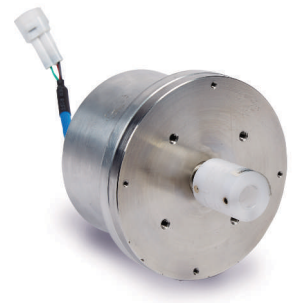
WIND SPEED SENSOR

Measures the wind speed Stainless steel 3 cup anemometer.



WRS

Measures the rotation of the winch, for measurement of hook height.



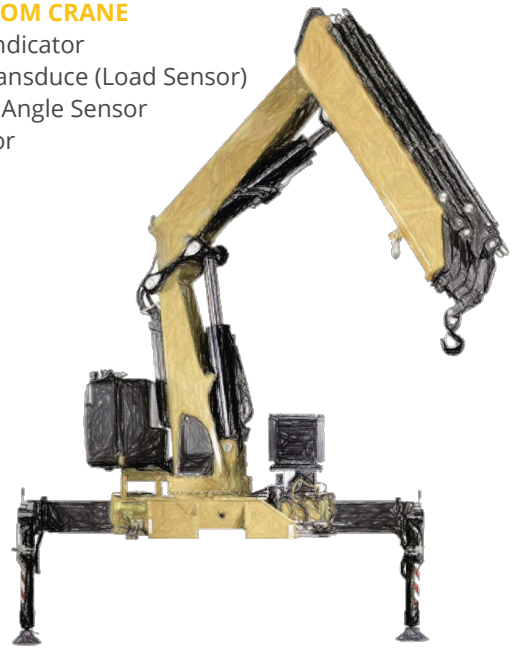
ROUGH TERRAIN CRANE

- Safe Load Indicator
- Length and Angle Sensor
- Dynamometer (Load Sensor)
- A2B (Over Hoist System)



KNUCKLE BOOM CRANE

- Safe Load Indicator
- Pressure Transduce (Load Sensor)
- Length and Angle Sensor
- Angle Sensor



PICK & CARRY CRANE

- Safe Load Indicator
- Length and Angle Sensor
- Pressure Transduce (Load Sensor)
- A2B (Over Hoist System)



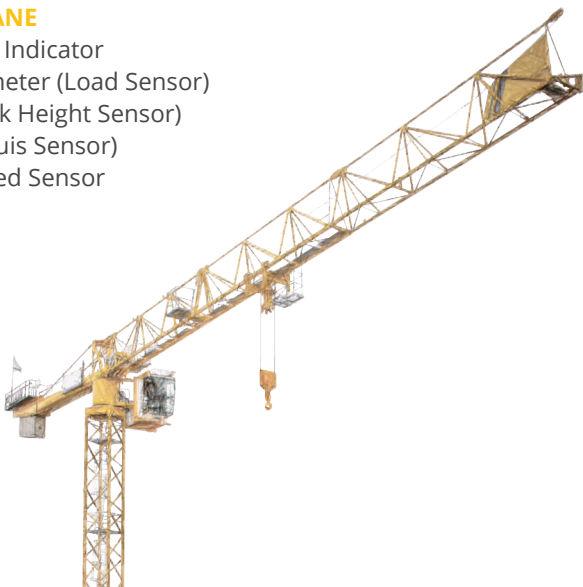
FORK LIFT

- Safe Load Indicator
- Pressure Transducer (Option 1)
- Load Pin (Option 2)



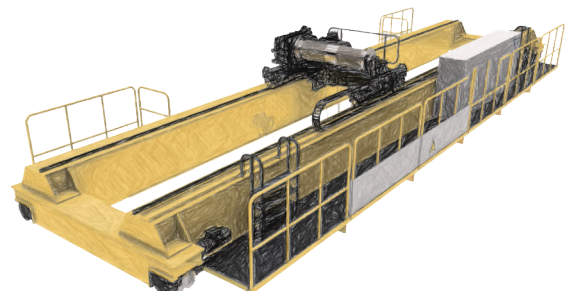
TOWER CRANE

- Safe Load Indicator
- Dynamometer (Load Sensor)
- WRS (Hook Height Sensor)
- WRS (Radius Sensor)
- Wind Speed Sensor



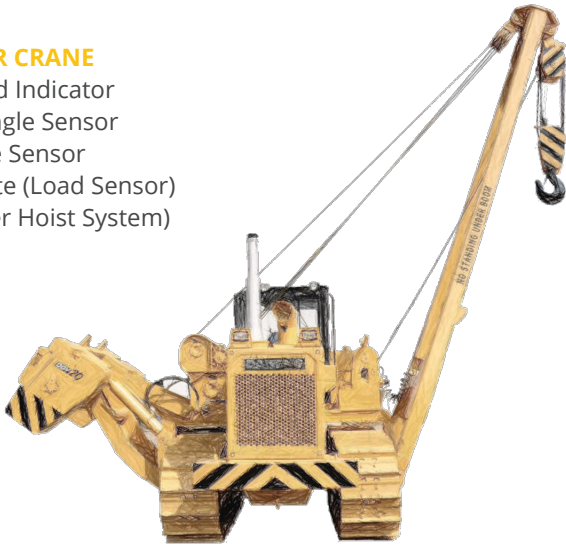
OVERHEAD OR GANTRY CRANE

- Large Display SLI
- Dynamometer (Option 1)
- Load Pin (Option 2)
- WRS (Hook Height Sensor)
- Wind Speed Sensor (Optional)



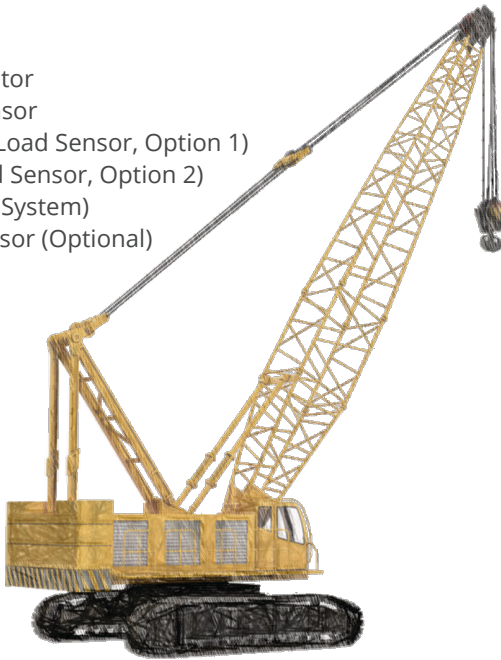
PIPE LAYER CRANE

- Safe Load Indicator
- Boom Angle Sensor
- Tilt Angle Sensor
- Load Plate (Load Sensor)
- A2B (Over Hoist System)



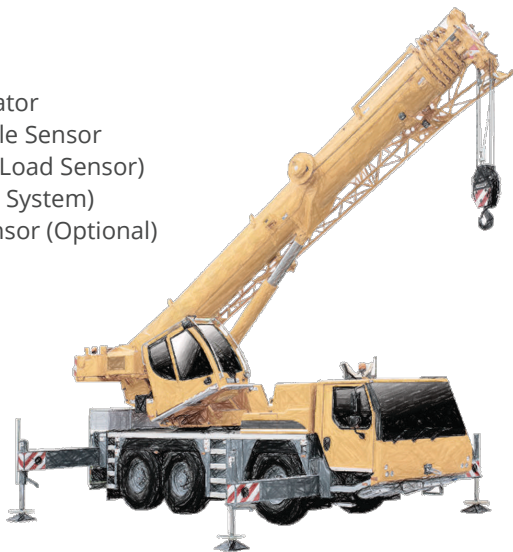
CRAWLER CRANE

- Safe Load Indicator
- Boom Angle Sensor
- Dynamometer (Load Sensor, Option 1)
- Load Plate (Load Sensor, Option 2)
- A2B (Over Hoist System)
- Wind Speed Sensor (Optional)



MOBILE CRANE

- Safe Load Indicator
- Length and Angle Sensor
- Dynamometer (Load Sensor)
- A2B (Over Hoist System)
- Wind Speed Sensor (Optional)



STANDARD FEATURES

Carry Cranes' Safe Load Indicator (SLI) systems offer a range of safety warnings:

- Overload Protection
- Anti-Two
- No Lift Zone
- Articulation

The SLI display unit provides visual and audio feedback for each warning. It also has a built-in light bar, indicating safe lifting zones. When wired to a hydraulic dump valve or relay, the unit will cut out the crane when unsafe operating conditions are incurred.

The system is fully programmable, all calibration is done electronically. It has options for multiple hooks as well as a first of its kind Articulation derating.

In an industry strictly regulated in terms of health and safety for lifting operations, it is law that all cranes be fitted with a Safe Load Indicator (SLI). Carry Cranes SLI unit can easily be retro-fitted to any crane and provides an affordable, reliable, and safe solution.

OPTIONAL COMPONENTS

- Hydraulic dump valve
- Articulation Limit Switch
- External Light Bar

INSTALLATION REQUIREMENTS

In order to install our SLI to new model cranes, it is important that the following information be available:

- Model and Type
- Load Chart
- Lift Cylinder Details

CARRY CRANES (PTY) LTD

A: 198 High Road, Bredell, Kempton Park

E: sales@carrycranes.co.za

W: www.carrycranes.co.za

T: +27 11 568 9033